

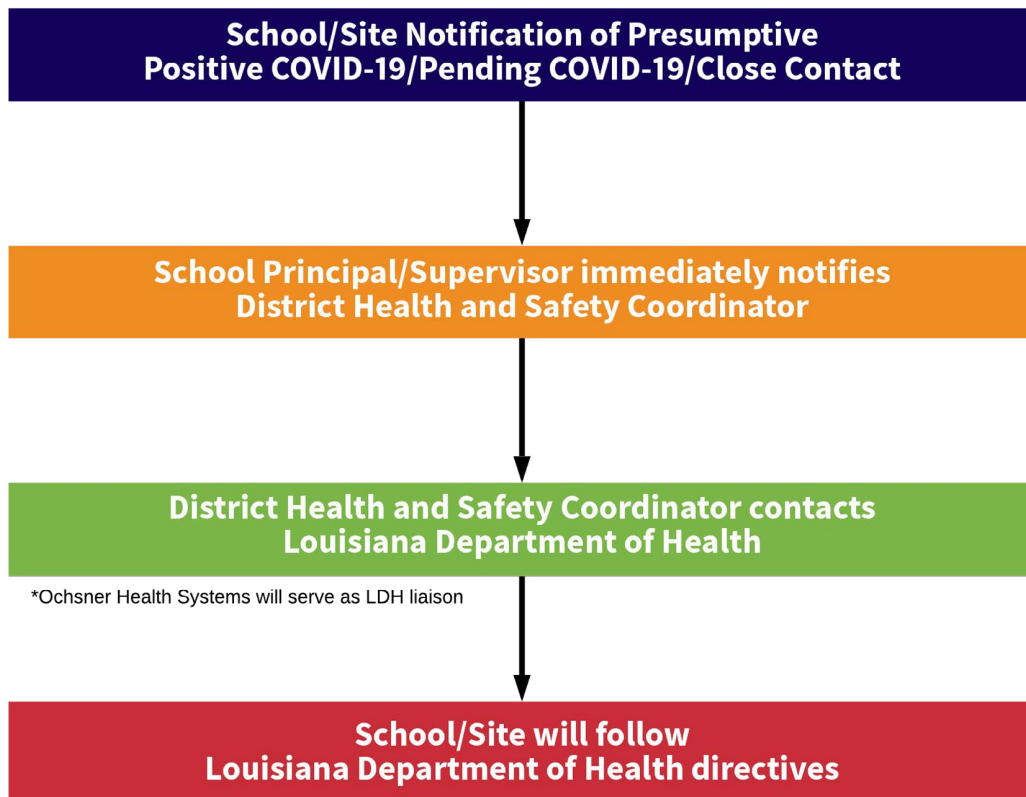


# SAFE STPPS EMPLOYEE AND STUDENT SCHOOL/WORK QUARANTINE AND ISOLATION RETURN GUIDE

## NOTIFICATION FLOW CHART

Parents/caregivers and employees must keep their school principal/site supervisor informed of any COVID-19 presumptive or actual diagnosis or community close contact. If students or employees must quarantine as a result of a diagnosed family member or community close contact, then they must stay home. Specific directives will then be explained relative to each unique situation when the school principal/site supervisor is notified.

If a student or employee is identified as a close contact at a school campus or office, the school/site supervisor will notify the employee/parent or caregiver. Specific directives will then be explained relative to each unique situation.



STPPS Health and Safety Coordinator  
Neely Richoux-Estrade, MSN, APRN, FNP-BC  
985-898-3215

# RETURN TO SCHOOL/WORK CRITERIA

The information in the charts below is in accordance with guidance from the Louisiana Department of Health (LDH) and Centers for Disease Control (CDC).

**Please Note: The procedures and protocols are subject to change as updated guidance is provided by governing authorities and public health officials.**

Per LDH-CDC guidelines,

- COVID-19 compatible symptoms include:
  - Fever OVER 100.4, cough, shortness of breath, chills, muscle or body aches, new headache, facial flushing, sore throat, persistent vomiting or diarrhea, and new loss of taste or smell. ([CDC Symptoms of Coronavirus –COVID-19](#))
- Isolation and quarantine are defined as:
  - **Isolation** keeps someone who is sick, tested positive for COVID-19, or has a pending COVID-19 test without symptoms away from others, even in their own home.
  - **Isolation Duration:** At home at least 10 days (from the first day of symptoms or test date if asymptomatic) with at least 24 hours fever free (without the use of fever-reducing medications), and improvements in symptoms.
  - **Quarantine** is used to keep someone **who might have been exposed to COVID-19**—excluding people who have had COVID-19 within the past 90 DAYS and those who have been fully vaccinated— away from others. People who have tested positive for COVID-19 do not need to quarantine for up to 90 DAYS as long as they do not develop symptoms. Quarantine helps prevent spread of disease that can occur before a person knows they are sick or if they are infected with the virus without feeling symptoms. People in quarantine should stay home, separate themselves from others, monitor their health, and follow directions from their state or local health department.
  - **Quarantine duration:** Close contacts of an individual infected with COVID-19 are required to quarantine for a minimum of seven (7) days if they test negative and remain symptom-free for the duration of the quarantine. The negative test must be on or after the 5th day of quarantine. If the individual who was in close contact, opts not to be tested for Covid-19, then a quarantine for 10 days is required and he/he remain symptom-free for the duration of the quarantine. **See the Return to School/Work Chart below for the most recent quarantine guidelines.** If an individual develops symptoms during quarantine, then they should call their medical provider. ([CDC Quarantine vs. Isolation](#))
- A **close contact** is defined as:
  - Any individual who has been within six feet of an infected person for at least 15 minutes during their infectious period, which includes the 48 hours before the person became sick (or if asymptomatic, the 48 hours before specimen collection) until the person was isolated.
  - An individual that had direct contact with a COVID-19 case (touched, hugged, kissed, shared eating, or drinking utensils).
  - While face coverings MAY be worn in a school setting by staff and students as they prevent transmission of COVID-19, the use of face coverings is not a factor in determining close contacts.
  - Contacts of CLOSE contacts do not need to quarantine unless the primary contact becomes positive or symptomatic during quarantine and the secondary contact had continued close contact up to 48 hours prior to the primary contact becoming symptomatic.

## Table A

### POSITIVE COVID-19 TEST RESULT

#### STAY HOME – ISOLATE

- Notify close contacts – employee or parent/caregiver notifies the principal/supervisor immediately of diagnosis.
- School will follow directives from LDH regarding contact tracing.

#### RETURN TO SCHOOL

- ✓ At least 10-day isolation (from first day of symptoms or test date if asymptomatic), **WITH**
- ✓ At least 24 hours fever free (without use of fever-reducing medications), **AND**
- ✓ improvements in symptoms.

## Table B

### SYMPTOMATIC WITH FEVER $\geq 100.4$ **AND AT LEAST 1 OTHER COVID-19 COMPATIBLE SYMPTOM** BUT NO KNOWN CLOSE CONTACT TO A COVID CASE

#### STAY HOME – ISOLATE

- Contact medical provider; monitor symptoms.
- **Isolate before, during, and until COVID-19 test results and/or medical diagnosis is received.**
- if COVID-19 positive test result, notify close contacts – employee or parent/caregiver notifies the principal/supervisor immediately of diagnosis.
- School will follow directives from LDH regarding contact tracing.

#### RETURN TO SCHOOL/WORK

##### ***If Positive COVID-19 test result or NO COVID-19 testing then:***

- ✓ At least 10-day isolation (from first day of symptoms or test date if asymptomatic), **WITH**
- ✓ At least 24 hours fever free (without use of fever-reducing medications), **AND**
- ✓ improvements in symptoms.

##### ***If Negative COVID-19 test result then:***

- ✓ At least 24 hours fever free (without use of fever-reducing medications), **AND**
- ✓ improvements in symptoms.

Table C

SYMPTOMATIC WITH COVID-19 COMPATIBLE SYMPTOMS BUT NO FEVER AND NO KNOWN CLOSE CONTACT TO A COVID CASE
<p><b>STAY HOME – ISOLATE</b></p> <ul style="list-style-type: none"> <li>• Contact medical provider; monitor symptoms.</li> <li>• <b>Isolate before, during, and until COVID-19 test results come back and/or medical diagnosis.</b></li> <li>• if COVID-19 positive test result, notify close contacts – employee notifies the principal/supervisor immediately of diagnosis.</li> <li>• School will follow directives from LDH regarding contact tracing.</li> </ul>
<p><b>RETURN TO SCHOOL/WORK</b></p> <p><b>If Positive COVID-19 test result then:</b></p> <ul style="list-style-type: none"> <li>✓ At least 10-day isolation (from first day of symptoms or test date if asymptomatic), <b>WITH</b></li> <li>✓ At least 24 hours fever free (without use of fever-reducing medications), <b>AND</b></li> <li>✓ improvements in symptoms.</li> </ul> <p><b>If Negative COVID-19 test result or NO COVID-19 testing then:</b></p> <ul style="list-style-type: none"> <li>✓ At least 24 hours fever free (without use of fever-reducing medications), <b>AND</b></li> <li>✓ improvements in symptoms.</li> </ul>

Table D

CLOSE CONTACT OF A KNOWN COVID CASE	
<p><b>STAY HOME – QUARANTINE</b> (may bypass quarantine if fully vaccinated or if positive for COVID within 90 days prior to close contact)</p> <ul style="list-style-type: none"> <li>• Monitor symptoms; contact medical provider if symptoms develop.</li> <li>• School will follow directives from LDH regarding contact tracing.</li> </ul>	
<p><b>RETURN TO SCHOOL</b></p> <p><b>Option 1: 7-Day Quarantine</b></p> <ul style="list-style-type: none"> <li>✓ <b>If negative COVID-19 test result, then:</b> Complete 7 days of quarantine from the last date of exposure to the case with no subsequent symptoms during that time. The negative COVID-19 test result must be collected on or after the 5th day of quarantine.</li> </ul> <p><b>Option 2: 10-Day Quarantine</b></p> <ul style="list-style-type: none"> <li>✓ <b>If no COVID-19 testing, then:</b> Complete 10 days of quarantine from the last date of exposure to the case with no subsequent symptoms during that time.</li> </ul> <p>if individual develops symptoms during quarantine, they should call their medical provider and follow isolation protocols outlined in Tables A, B, and C.</p>	<p><b>REQUESTED DOCUMENTS</b></p> <p>Option 1: 7-Day Quarantine</p> <ul style="list-style-type: none"> <li>✓ Negative COVID-19 test result from a test taken on or after the 5th day of beginning quarantine.</li> </ul> <p>Note: An employee/student who has tested positive for COVID-19 will not have to quarantine due to close contact if he/ she has tested positive for COVID-19 within 90 days prior to the close contact.</p> <p>An employee /student who is a close contact with a COVID-19 positive person does not need to quarantine if he/she at the time of exposure is fully vaccinated AND has remained asymptomatic since the exposure. If the individual develops symptoms, he/she should self-quarantine immediately for 10 days after symptoms begin or get a COVID-19 test.</p> <p>To determine if you are fully vaccinated, visit:  <a href="https://www.cdc.gov/coronavirus/2019-ncov/vaccines/fully-vaccinated.html">https://www.cdc.gov/coronavirus/2019-ncov/vaccines/fully-vaccinated.html</a></p>