



WE EDUCATE **EVERY CHILD, EVERY DAY**

AS AN EDUCATION LEADER, OUR DISTRICT ENSURES FUTURE SUCCESS FOR EVERY STUDENT BY PROVIDING **CARING LEARNING ENVIRONMENTS**, A **CHALLENGING CURRICULUM** AND **INNOVATIVE INSTRUCTION**.

DISTRICT FAST FACTS

LEADER IN EDUCATION



A
DISTRICT GRADE

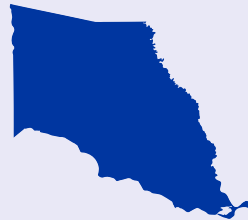
104.1
DISTRICT PERFORMANCE SCORE



Scores given by Louisiana Department of Education

OUR STUDENTS

39,000
STUDENTS



55
SCHOOLS



29%
MINORITY STUDENTS

2%
LIMITED ENGLISH PROFICIENCY

43%
FREE/REDUCED LUNCH STUDENTS

25% SERVED BY **SPECIAL EDUCATION**

1,777 GIFTED

1,043 TALENTED

6,717 OTHER EXCEPTIONALITIES AND IMPAIRMENTS

OUR DEDICATED TEAM

5,852* SCHOOL SYSTEM EMPLOYEES

** LARGEST EMPLOYER IN ST. TAMMANY PARISH*



100%
ALL STPPS TEACHERS ARE CERTIFIED



53%
TEACHERS HAVE MASTER'S DEGREE OR MORE



100%
TEACHERS ATTEND HIGH QUALITY PROFESSIONAL DEVELOPMENT

PREPARING STUDENTS **FOR SUCCESS**



2,405 LAST YEAR
#STPPSGrads



...AND THEY WERE OFFERED MORE THAN **\$100 MILLION** IN SCHOLARSHIPS AND TOPS FUNDING



13 NATIONAL MERIT FINALISTS



63% STUDENTS SCORED 3 OR ABOVE ON AP TESTS

22.0 COMPOSITE ACT SCORE

CONTINUES TO LEAD AND EXCEEDS NATIONAL AVERAGE



READY FOR THE **WORKFORCE**

15,519 DUAL ENROLLMENT CREDIT HOURS EARNED



5,261 INDUSTRY-BASED CERTIFICATIONS EARNED IN CAREER TECH PROGRAMS

TECHNOLOGY INNOVATION



100%
INTERNET-ACCESSIBLE
CLASSROOMS

ALL
55 CAMPUSES
ARE WIRELESS



3500+
WIRELESS
ACCESS POINTS

SAFE SCHOOLS



1,250

SECURITY CAMERAS IN STPPS SCHOOLS



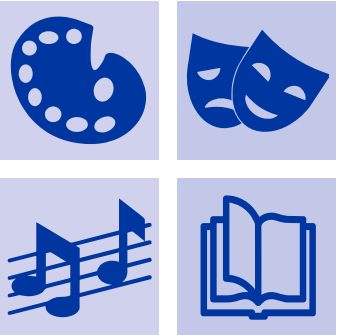
ALL STPPS SCHOOLS HAVE
PERIMETER FENCING



100%
SCHOOL BUSES EQUIPPED
WITH SECURITY CAMERAS AND
TWO-WAY RADIOS

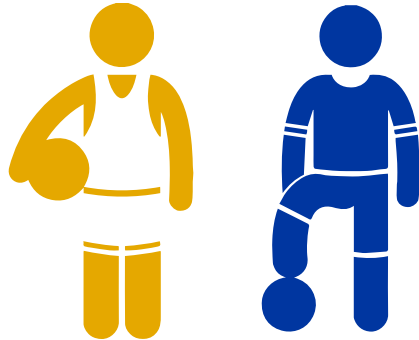


100%
STPPS SCHOOLS WITH VISITOR
PHOTO ID SYSTEM



100+

CLUBS & ORGANIZATIONS
ON SCHOOL CAMPUSES



5,000+

STUDENTS PARTICIPATE IN
ATHLETICS IN 18 DIFFERENT SPORTS



SUPPORT SERVICES

OUR BUS OPERATORS DRIVE

380 BUSES

AND THEY TRANSPORT

31500 STUDENTS

AND TRAVEL

29020 MILES DAILY

**HEALTHY
STUDENTS**



32,251
MEALS SERVED DAILY



OVER 150,000

HEARING & VISION SCREENINGS
CONDUCTED IN THE PAST 10 YEARS



COMMUNITY CONNECTIONS

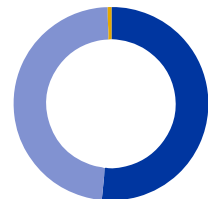


PARTNERSHIPS PROVIDE
**SUPPORT AND
RESOURCES**
FOR OUR SCHOOLS

AN ECONOMIC ENGINE

AND GOOD STEWARDS OF TAXPAYER DOLLARS

GENERAL FUND REVENUE



STATE
52%

LOCAL
48%

FEDERAL
< 1%

HIGHEST BOND



IN LOUISIANA

RATING
OF ANY
SCHOOL
BOARD

AA BOND RATING
BY STANDARD & POOR'S

#TogetherSTPPS

SCHOOL BOARD

Neal M. Hennegan, *District 1*
Elizabeth B. Heintz, *District 2 (Ed. & HR Chair)*
Michael J. Dirmann, *District 3 (Vice President)*
Stephen J. "Jack" Loup, III, *District 4*
Charles T. Harrell, *District 5*
Michael C. Nation, *District 6 (BA & Admin. Chair)*
Willie B. Jeter, *District 7*
Peggy H. Seeley, *District 8*
Sharon Lo Drucker, *District 9*
Ronald "Ron" Bettencourt, *District 10*
Robert R. "Bob" Womack, *District 11*
Richard "Rickey" Hursey, Jr., *District 12*
Robin P. Mullett, *District 13 (President)*
Dennis S. Cousin, *District 14*
Mary K. Bellisario, *District 15*

ADMINISTRATION

W. L. "Trey" Folsie, III, *Superintendent*
Peter J. Jabbia, *Associate Superintendent*
Regina Sanford, Ph.D., *Assistant Superintendent*
Michael J. Cossé, *Assistant Superintendent*

WE ARE STPPS



C.J. Schoen
Administrative Complex
321 N. Theard St. • Covington, LA 70433
985-892-2276 • www.stpsb.org

Updated January 4, 2018

[f](#) [t](#) [i](#) [v](#) [@stppschools](#)